

BORA

PORTLAND PUBLIC SCHOOLS AND PORTLAND PARKS & RECREATION

Grant Bowl Master Plan



Master Plan Advisory Group Meeting 3
December 12, 2019



PORTLAND PARKS
& RECREATION

Healthy Parks, Healthy Portland

CAMERON
McCARTHY

LANDSCAPE ARCHITECTURE & PLANNING

AGENDA

Opening Remarks 0:05

What We Heard 0:20

Master Plan Refinement Review 0:60

Support Facilities 0:20

Next Steps 0:05

Public Comment 0:10

What We Heard

WHAT WE HEARD MASTER PLANNING ADVISORY GROUP MEETING 2

Commitment from all coaches to find the solution that works best for all, despite potential compromises to any individual sport

Preference for softball game field at the upper field because the group feels it best minimizes conflicts between sports activities, especially in the busy spring season

Safety is paramount and a 20' minimum buffer from field boundaries to permanent fencing is required

Support for seating extending around the curve, especially on the east side of the track near the finish line

Secondary practice field can utilize a portable backstop and be shared by softball and baseball

General excitement for the emerging stadium master plan design approach

WHAT WE HEARD COMMUNITY ENGAGEMENT MEETING 2

FIELD IMPROVEMENTS

OPTION A - Softball in the Bowl

ATHLETIC FIELD

LEGEND

- ATHLETIC FIELD FENCE
- SOFTBALL FIELD FENCE
- TRACK SURFACING
- CRACK / ASPHALT
- FIELD WALKWAYS
- INDOOR BALLROOM
- MOVABLE DUGOUT
- PERMANENT BACKSTOP
- TEMPORARY BACKSTOP

PROS

- General: Seating and lights extend capabilities of the Bowl including holding football and soccer games
- Softball: Able to provide facility that complies with title IX in Grant Bowl including temporary bleachers, movable dugouts, semi-permanent backstop
- Softball: Sufficient backstop and fencing design for safe facility (25' homeplate to fence)
- Track: Increased javelin runway 68' to 95'
- Track: Added shot put under landing area and more practice throwing rings
- Track: Added more track surfacing in 'D' Zones
- Track: Placed discus and shot put in some 'D' Zone (coaching shared). More space for shot put practice rings

CONS

- Softball: Backstop fencing in Grant Bowl is 90' from football/soccer field play lines
- Softball: Home plate to fencing is 20' (NFHS is 25')
- Softball: Backstop netting is semi-permanent and requires soccer lift to remove initial
- Softball: Outfield (200') overlap if both bowl fields utilized
- Softball: Requires use of portable seating shelters for dugouts
- Little League: Removes both permanent backstops in Bowl
- Soccer: Field in the Bowl reduced in width from 210' to 205' (not within regulations)
- Track: Requires adjustment to long jump and pole vault runways

FIELD IMPROVEMENTS

OPTION B - Softball at the Upper Field

ATHLETIC FIELD

LEGEND

- ATHLETIC FIELD FENCE
- SOFTBALL FIELD FENCE
- TRACK SURFACING
- CRACK / ASPHALT
- FIELD WALKWAYS
- INDOOR BALLROOM
- MOVABLE DUGOUT
- PERMANENT BACKSTOP

PROS

- General: Seating and lights extend capabilities of the Bowl including holding football and soccer games
- General: Adds lights to upper field to extend use of facility
- Softball: Able to provide facility that complies with title IX on upper field including bleachers and permanent covered dugouts
- Softball: Sufficient backstop and fencing design for safe facility (25' homeplate to fence) on upper field
- Softball: Upper field linework less distracting (no football line)
- Softball: More easily accessible seating for spectators
- Softball: Closer to locker room and indoor facilities
- Soccer: Adds length to upper field by extending turf south
- Track: Increased javelin runway 68' to 95'
- Track: Added shot put under landing area and more practice throwing rings
- Track: Added more surface in 'D' Zone (possible high jump)

CONS

- General: Renovation to new field multi-use field
- General: Expansion of multi-use upper field reduces landscape area
- General: Requires additional investment for lights on upper field
- Little League: Removes one Grant Bowl backstop (permanent chainlink)
- Baseball and softball: Will need to coordinate as fields overlap on upper field

FIELD LIGHTING AND SCOREBOARD

OPTION A - Softball in the Bowl

FIELD LIGHTING

LEGEND

- PROPOSED LIGHTING
- PROPOSED SCOREBOARD
- EXISTING SCOREBOARD

PROS

- Increases the usability of the Bowl for a wide array of activities and events
- Allows home football, soccer, lacrosse games
- Accommodates softball practice and games at GHS
- Provides low level lighting of track for community early morning evening use
- Increases safety of the park by adding more activity and more lights
- Reduces vandalism of the Bowl and the park
- Scoreboard faces north, away from high zone houses
- Maintains use of existing scoreboard for baseball

CONS

- Upper field remains without lights limiting its use

FIELD LIGHTING AND SCOREBOARD

OPTION B - Softball at the Upper Field

FIELD LIGHTING

LEGEND

- PROPOSED LIGHTING
- PROPOSED SCOREBOARD

PROS

- Increases the usability of the Bowl for a wide array of activities and events
- Allows home football, soccer, lacrosse games
- Allows evening use of upper field for practice and games
- Accommodates softball practice and games at GHS
- Provides low level lighting of track for community early morning evening use
- Increases safety of the park by adding more activity and more lights
- Reduces vandalism of the Bowl and the park
- Efficiency of using single poles for back to back field lighting

CONS

- Additional cost of additional lights
- Bowl scoreboard faces south, may be visible from US Grant Place
- Requires new or relocated scoreboard for upper field so that it accommodates both baseball and softball

Low pole lights, over out off angles

Low pole lights, over out off angles

Strong preference for Option B - softball at a modified upper field with lighting

WHAT WE HEARD COMMUNITY ENGAGEMENT MEETING 2

SUPPORT BUILDINGS

OPTION B - Freestanding Structures

Pros

1. Minimizes building mass at the Bowl
2. Conveniently serves upper field
3. No impact to seat count
4. Phaseable construction

Cons

1. Visual impact to the park
2. Requires removal of tree(s)
3. Distance from Bowl to amenities
4. Requires more extensive fencing
5. Lacks clear primary entries to stadium

Question

1. Could pool building and/or gymnasium restrooms be used for maximum capacity events?

SUPPORT BUILDINGS

OPTION A - Integrated Structures

Pros

1. Minimizes building footprint in the park
2. Tree preservation
3. Convenience and accessibility of amenities from Bowl
4. Potential for additional seating capacity in the curves
5. Less visual impact of building masses
6. Potential for seating terraces to merge into the slope
7. Upper field served by convenient amenities

Cons

1. Additional seating areas have poorer sightlines to center of bowl
2. Two amenity buildings have larger footprint

ACCESS AND SECURITY

OPTION A - Softball in the Bowl

PROS

1. All gates remain open for park use except during ticketed events
2. Wider security perimeter allows movement from one side of the bowl to the other without leaving the ticketed zone
3. Maintains current emergency/maintenance vehicle access to the Bowl

CONS

1. Requires four ticket control points
2. More extensive fencing has larger visual impact to the park

ACCESS AND SECURITY

OPTION B - Softball at the Upper Field

PROS

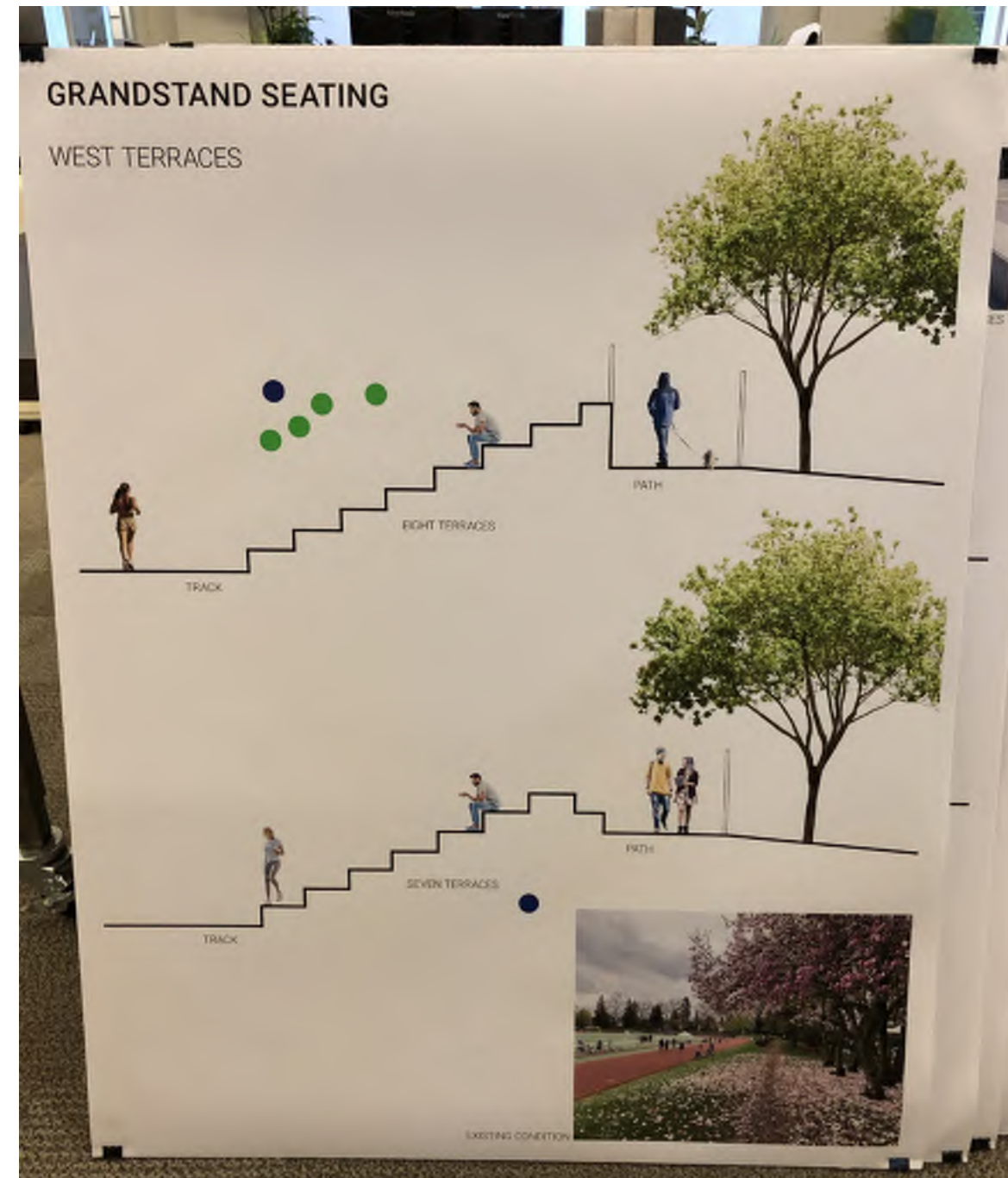
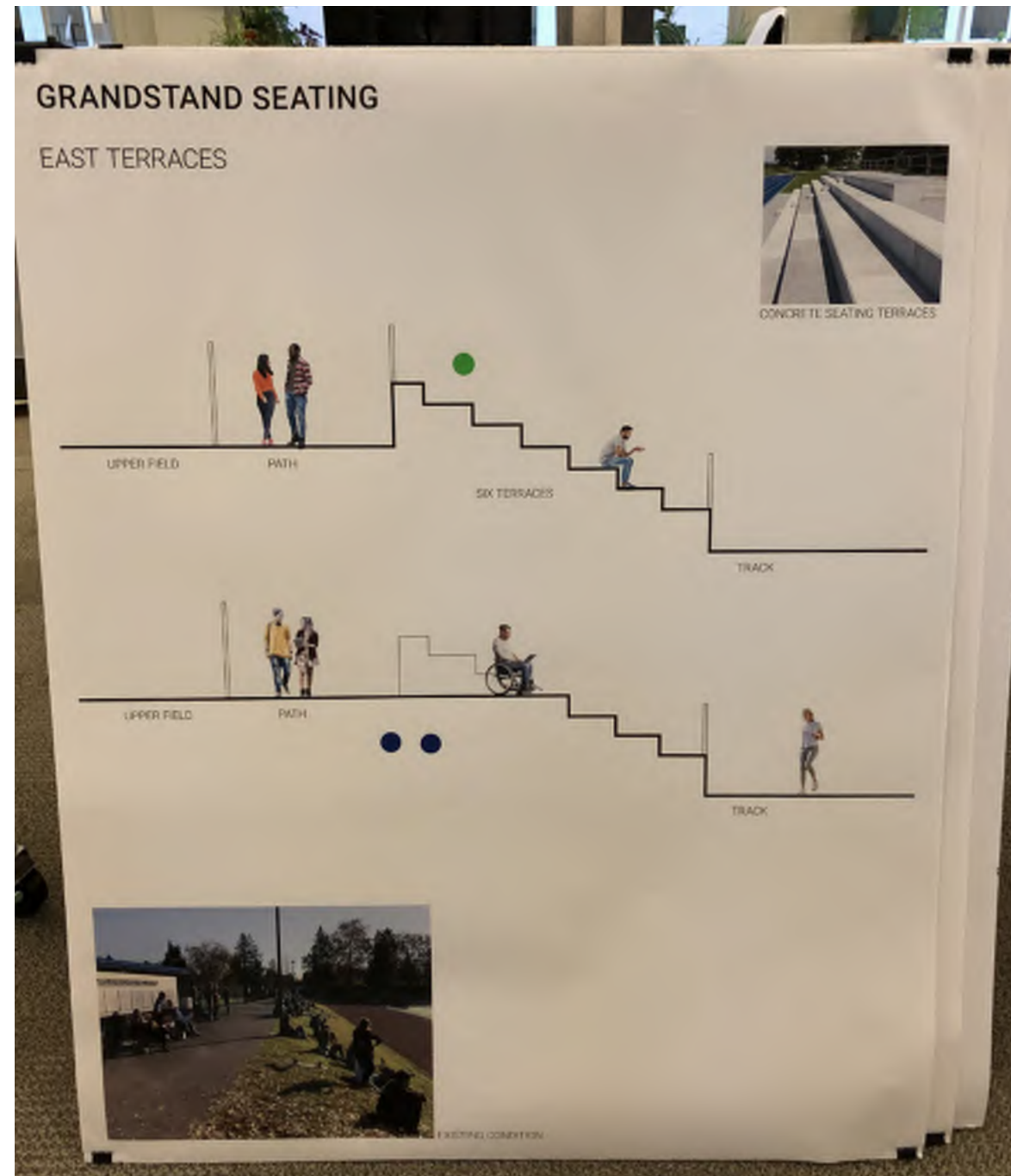
1. All gates remain open for park use except during ticketed events
2. Requires the minimum extent of fencing to establish secure geometry
3. Fencing remains close to the bowl to minimize impact to the park
4. Maintains current emergency/maintenance vehicle access to the Bowl
5. Only requires three ticket control points

CONS

1. Movement from one side of the bowl to the other without leaving the ticketed zone is not accessible and requires use of the track

Clear preference for Option B - integrated buildings and more compact fencing

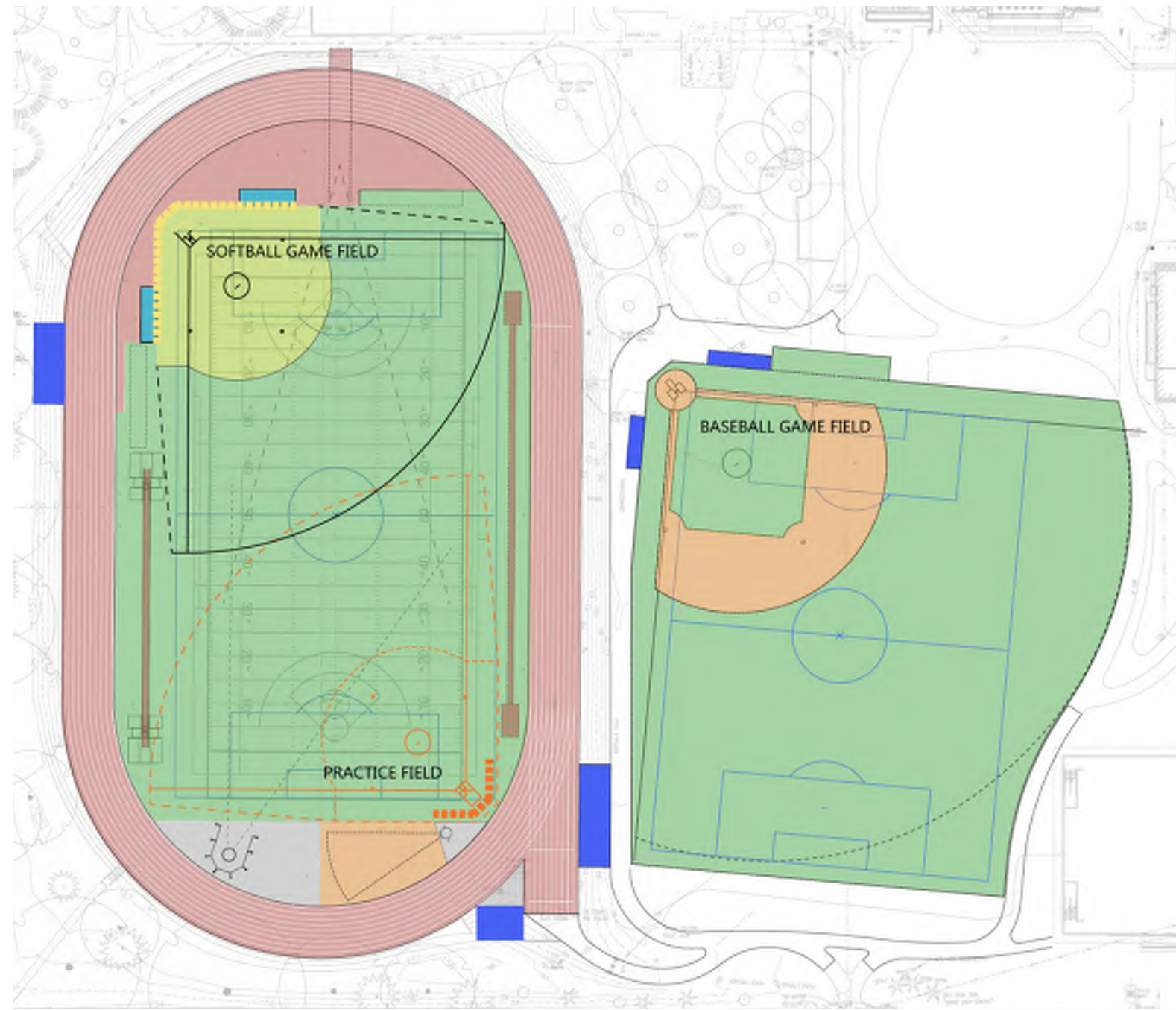
WHAT WE HEARD COMMUNITY ENGAGEMENT MEETING 2



Generally positive feedback regarding approach to grandstands - keeping low profile is important, but providing good sightlines are too.

Master Plan Refinement Review

FIELD IMPROVEMENTS

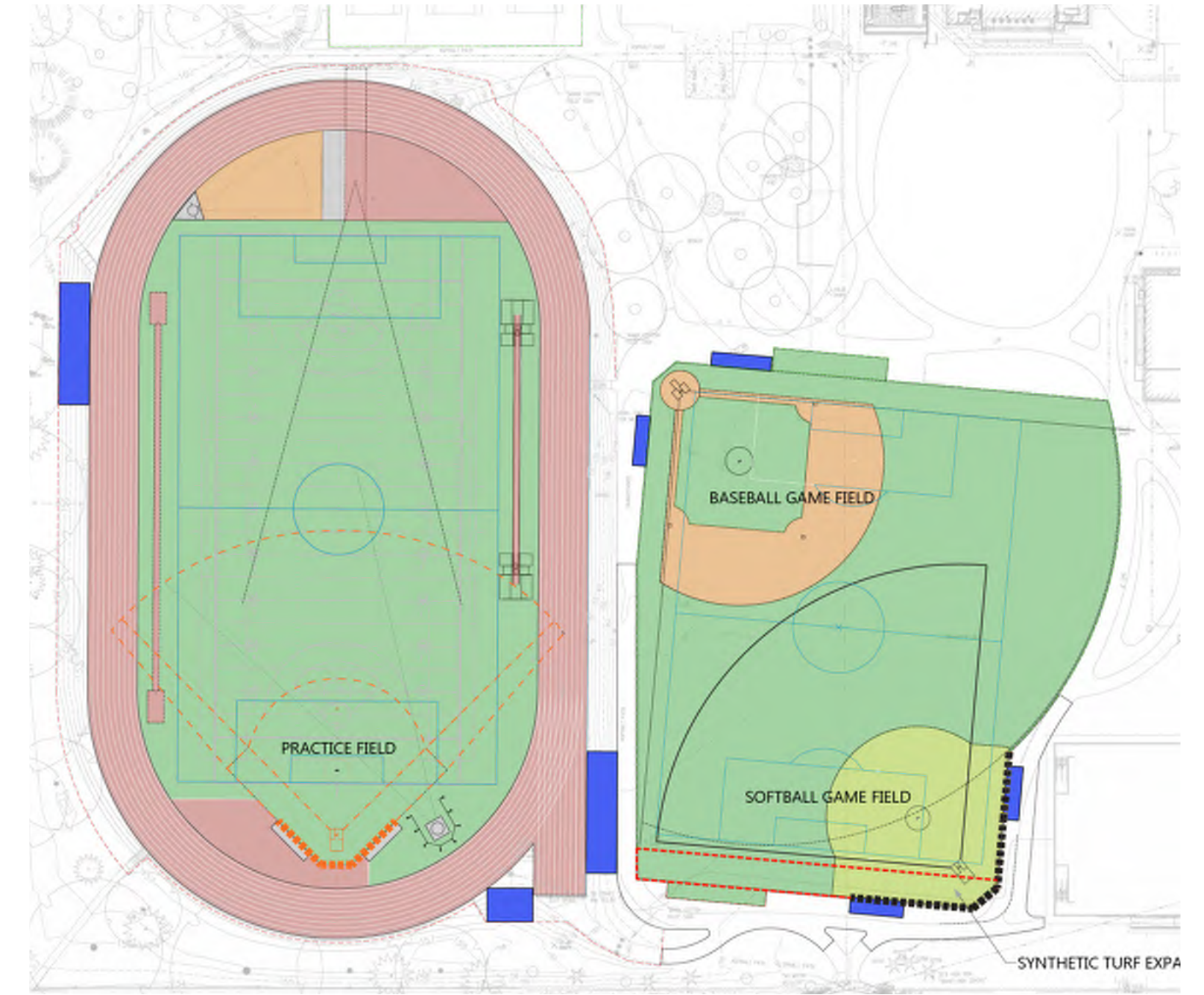


A

Softball in the Bowl

Removable backstop netting

Portable dugouts



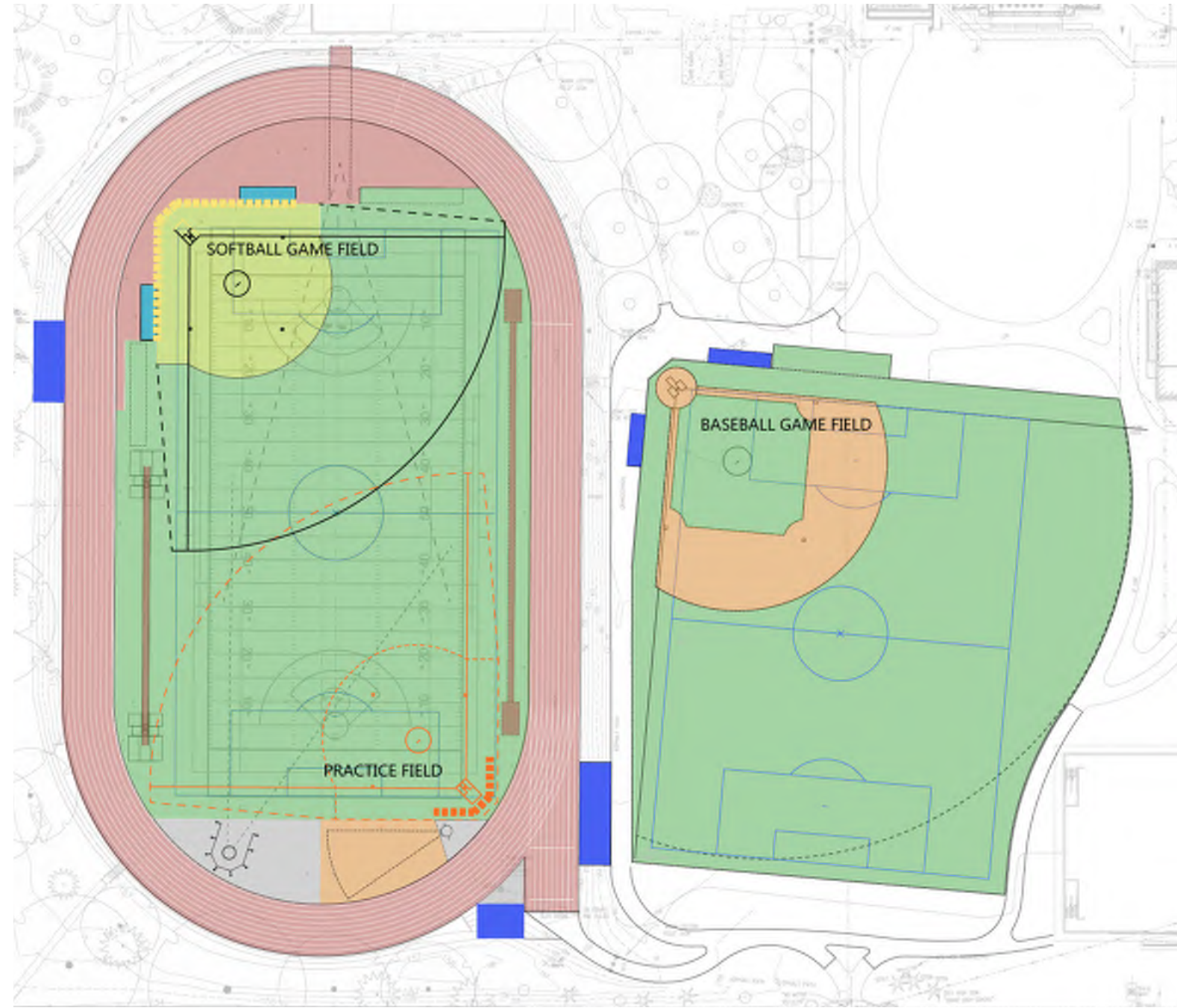
B

Softball at the upper field

Permanent backstop fencing

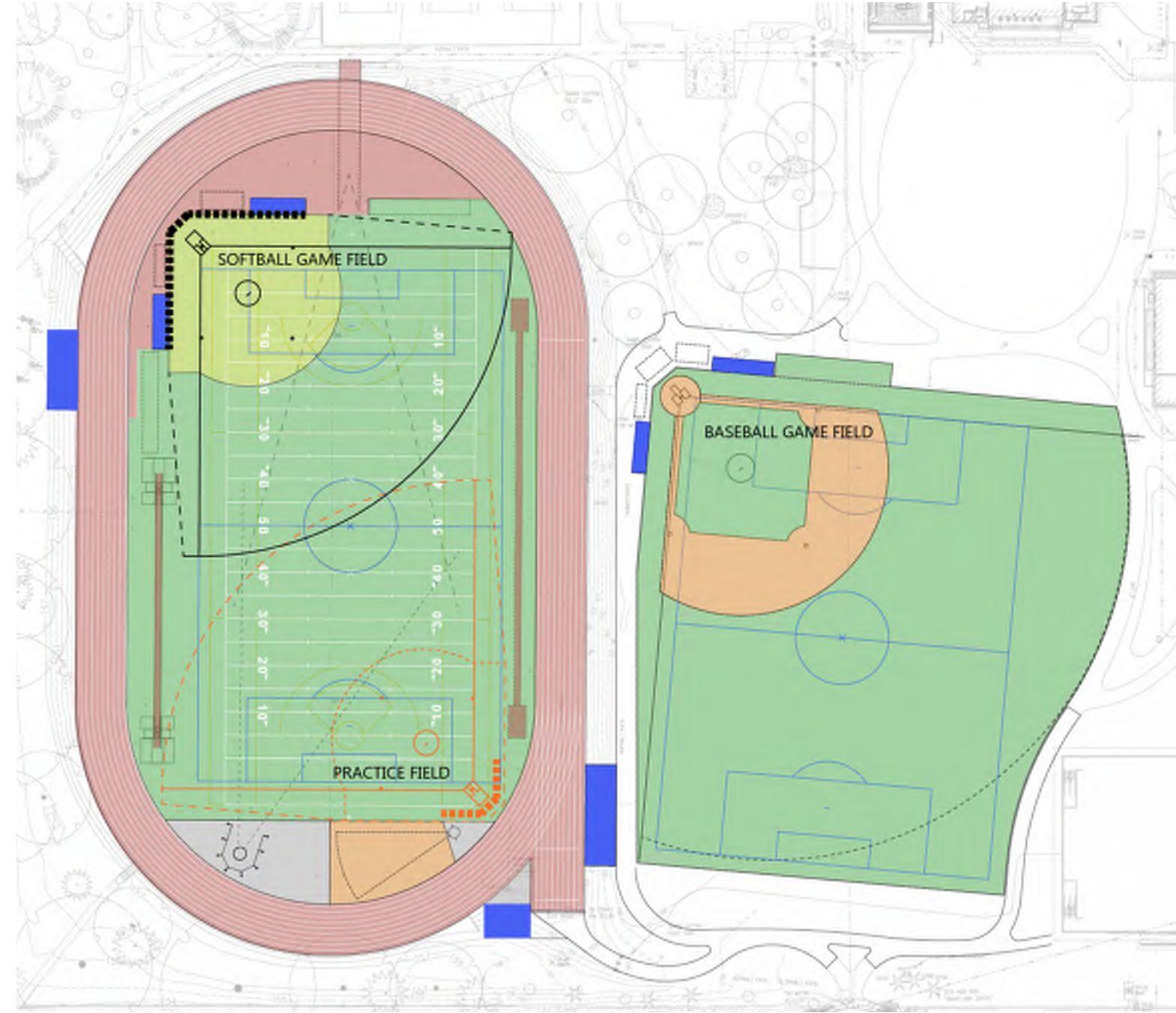
Permanent dugouts

FIELD IMPROVEMENTS



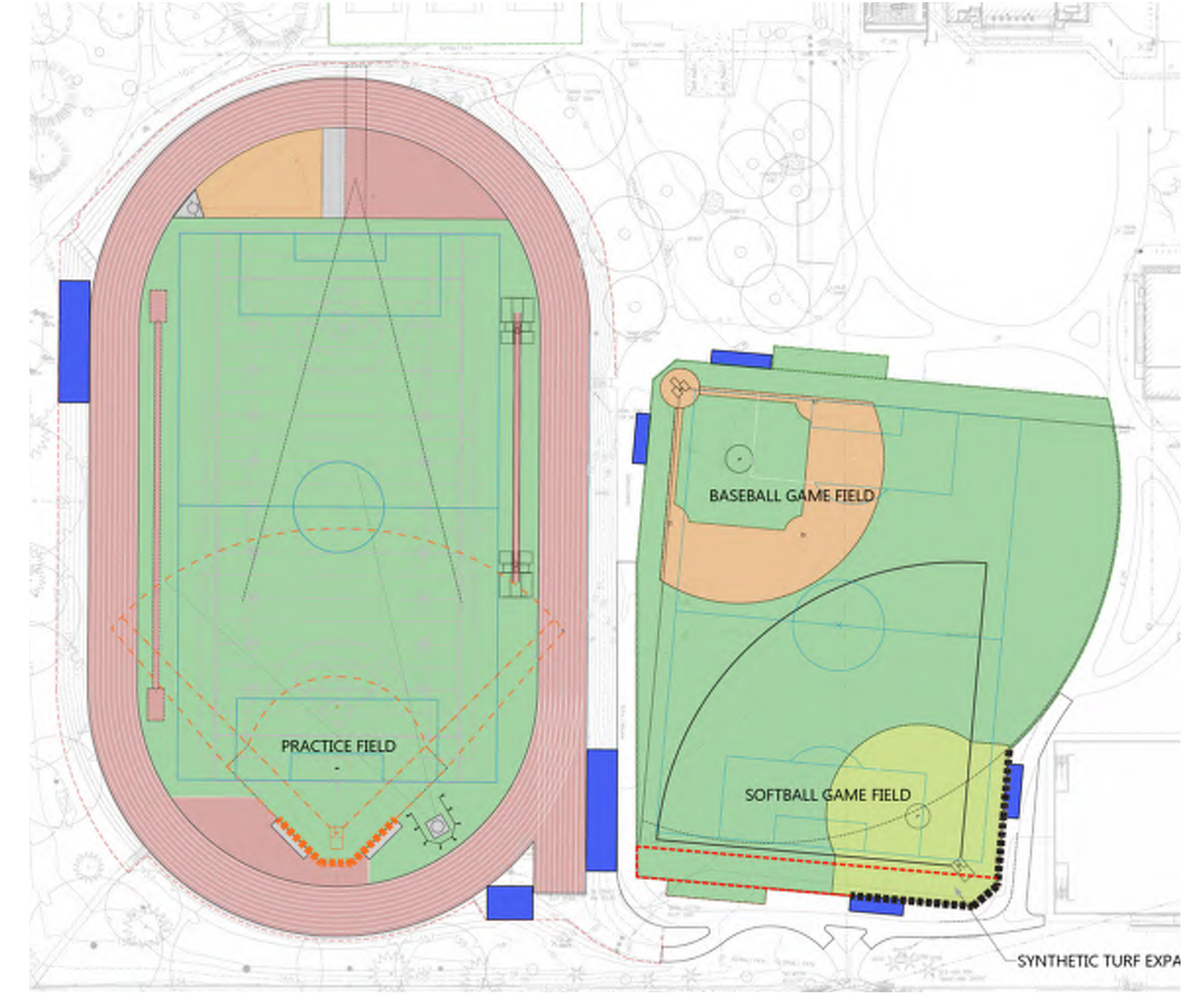
A1

Softball in the Bowl
Removable backstop netting
Portable dugouts



A2

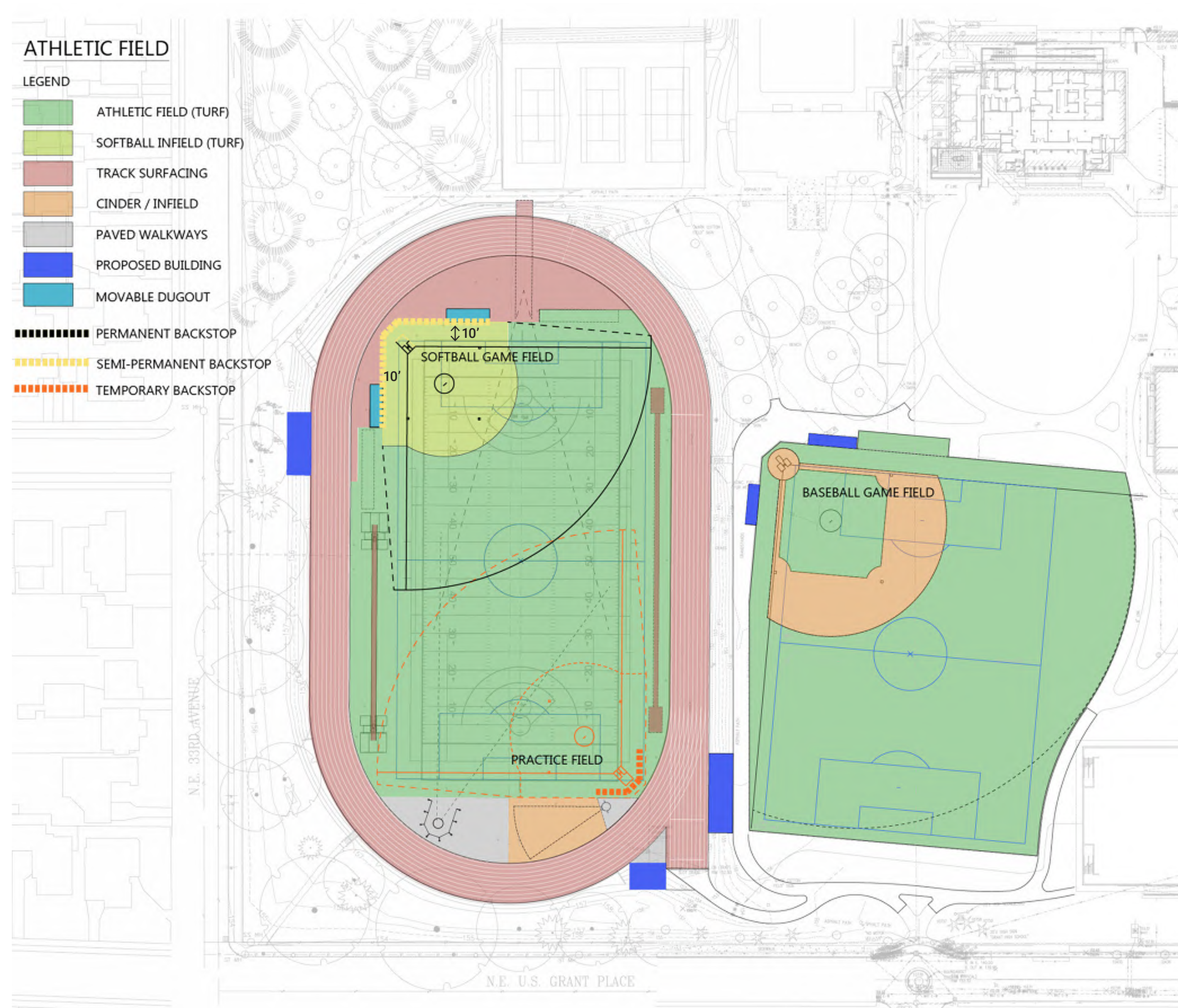
Softball in the Bowl
Permanent backstop fencing
Permanent dugouts



B

Softball at the upper field
Permanent backstop fencing
Permanent dugouts

OPTION A1



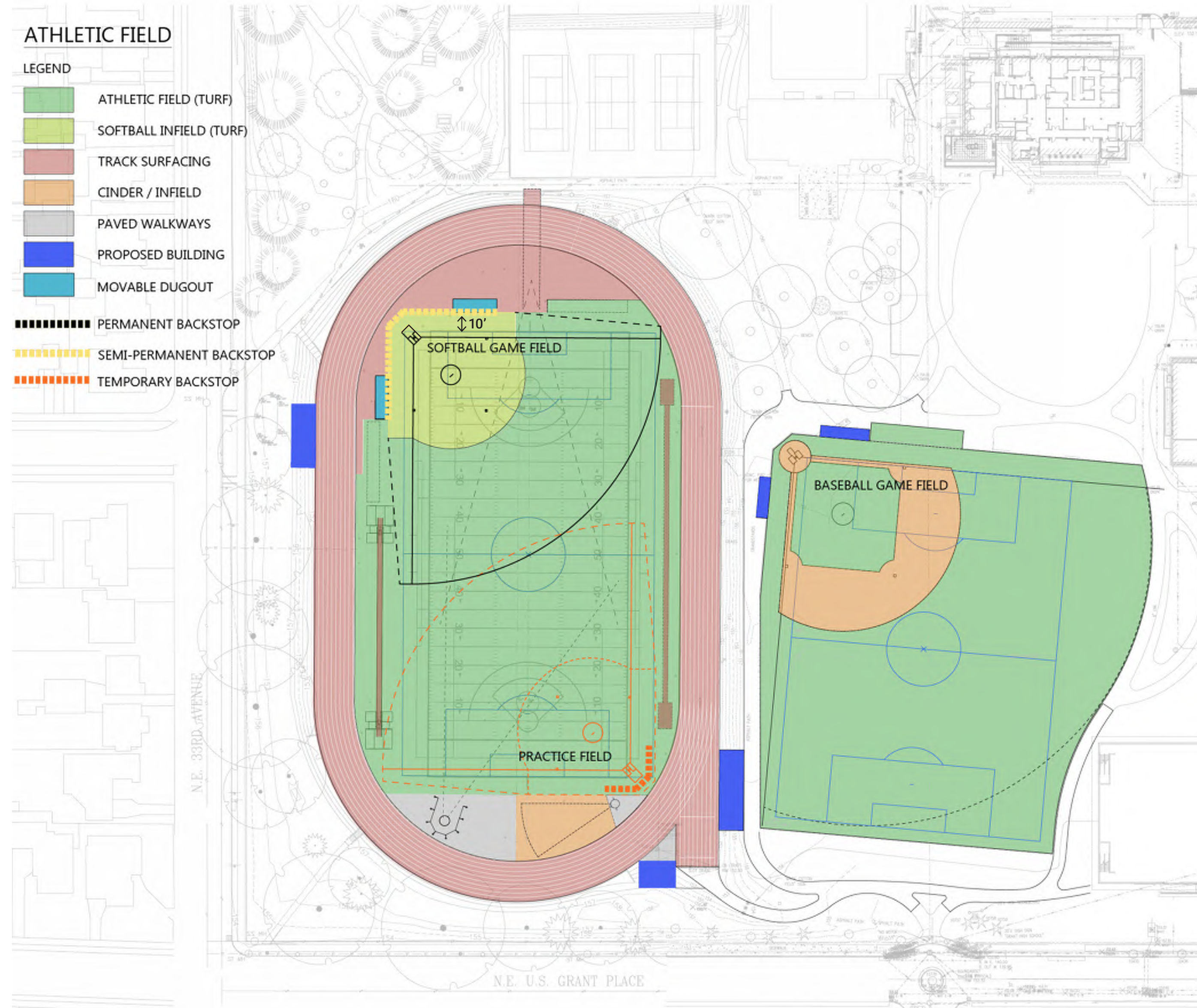
PROS

1. General: Seating and lights extend capabilities of the Bowl including hosting football and soccer games
2. Softball: Able to provide facility that complies with OSAA regulations in Grant Bowl including temporary bullpens, movable dugouts, semi-permanent backstop.
3. Softball: Sufficient backstop and fencing design for safe facility (20' Homeplate to fence)
4. Track: Increased javelin runway 68' to 95'
5. Track: Added shot put cinder landing area and more practice throwing rings.
6. Track: Added more track surfacing in 'D' Zones
7. Track: Placed discus and shot put in same 'D' Zone (coaching shared). More space for shot put practice rings.

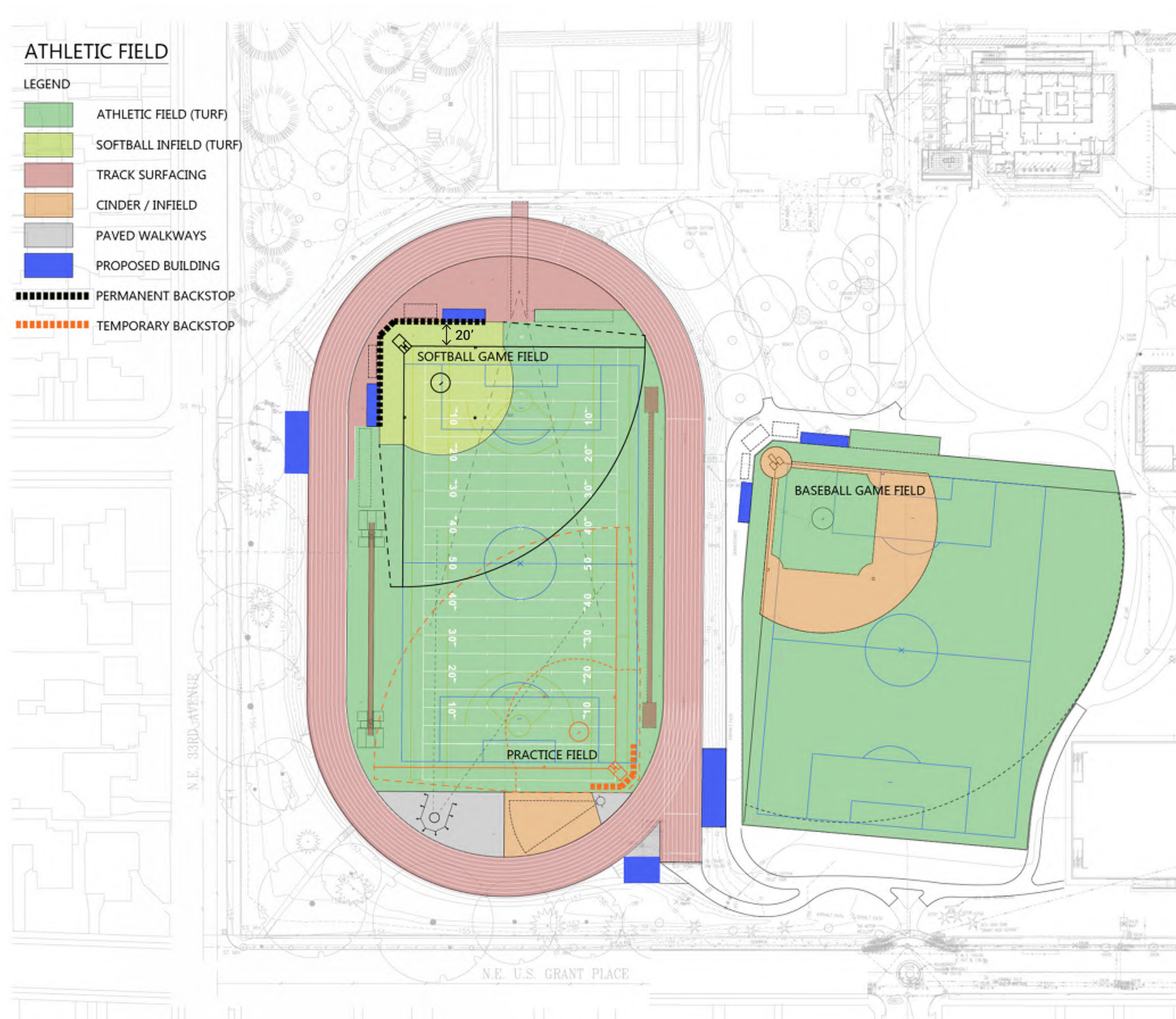
CONS

1. Softball: Backstop fencing in Grant Bowl is 10' from football/soccer field play lines.
2. Softball: Home plate to fencing is 20' (NFHS is 25')
3. Softball: Backstop netting is semi-permanent and requires scissor lift to remove/install.
4. Softball: Outfield (200') overlap if both Bowl fields utilized.
5. Softball: Requires use of portable seating shelters for dugouts.
6. Little League: Removes both permanent backstops in Bowl
7. Soccer: Field in the Bowl reduced in width from 210' to 205' (still within regulations).
8. Track: Requires adjustment to long jump and pole vault runways

OPTION A1



OPTION A2



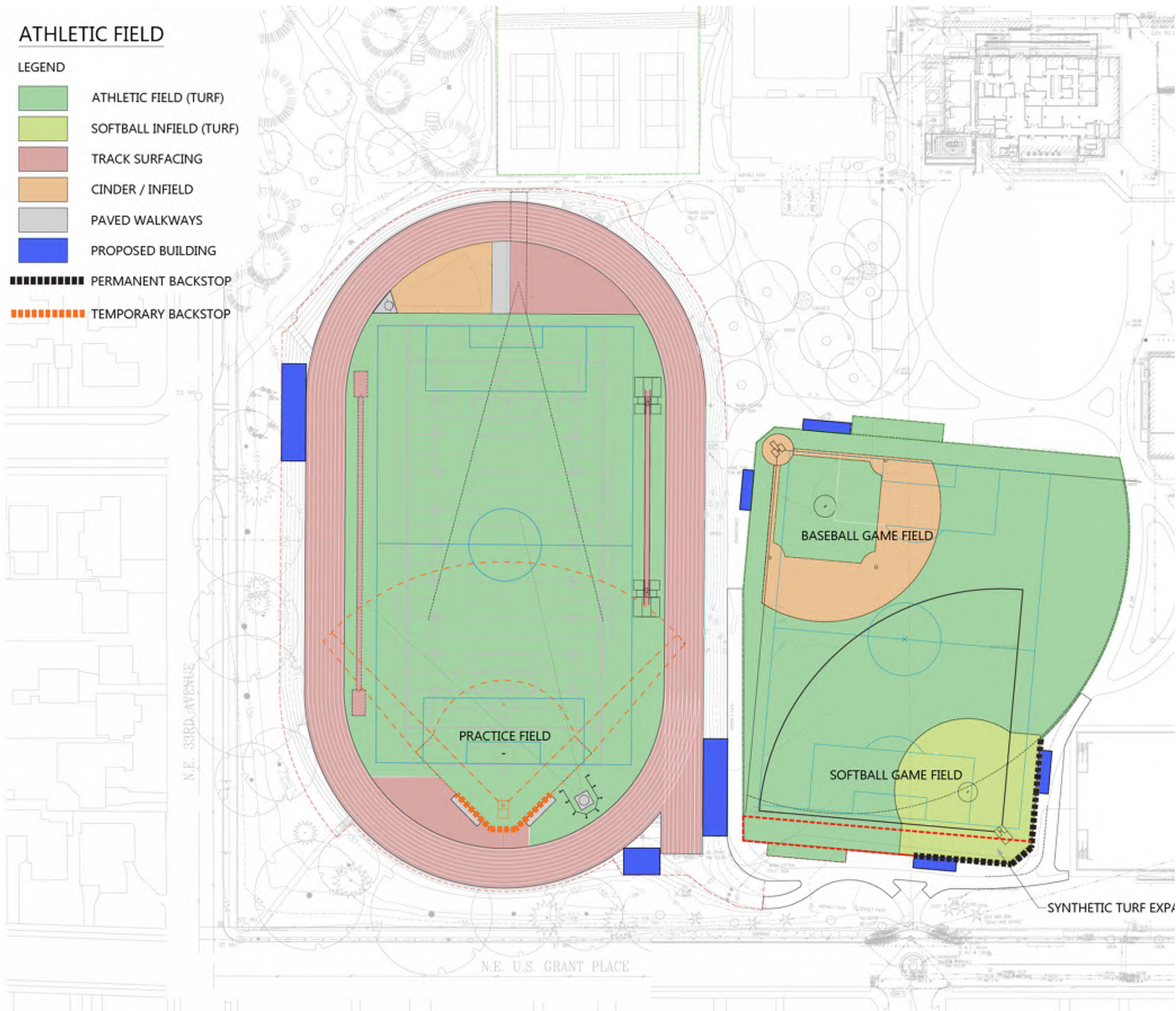
PROS

1. General: Seating and lights extend capabilities of the Bowl including hosting football and soccer games
2. Softball: Able to provide facility that complies with OSAA regulations in Grant Bowl including temporary bullpens, permanent dugouts, permanent fencing backstop.
3. Softball: Sufficient backstop and fencing design for safe facility (20' Homeplate to fence)
4. Track: Increased javelin runway 68' to 95'
5. Track: Added more track surfacing in north 'D' zone
6. Track: Added shot put cinder landing area and more practice throwing rings.
7. Track: Placed discus and shot put in same 'D' zone (coaching shared).
8. Backstop fencing is 20' from football/soccer field play lines.

CONS

1. Softball: Home plate to fencing is 20' (NFHS is 25')
2. Softball: Outfield (200') overlap if both Bowl fields utilized.
3. Little League: Removes one permanent backstop in Bowl
4. Soccer: Field in the Bowl reduced in width from 210' to 195' and length from 360' to 330'.
5. Track: Requires adjustment to long jump and pole vault runways
6. General: Softball backstop disrupts some views into the Bowl.

OPTION B



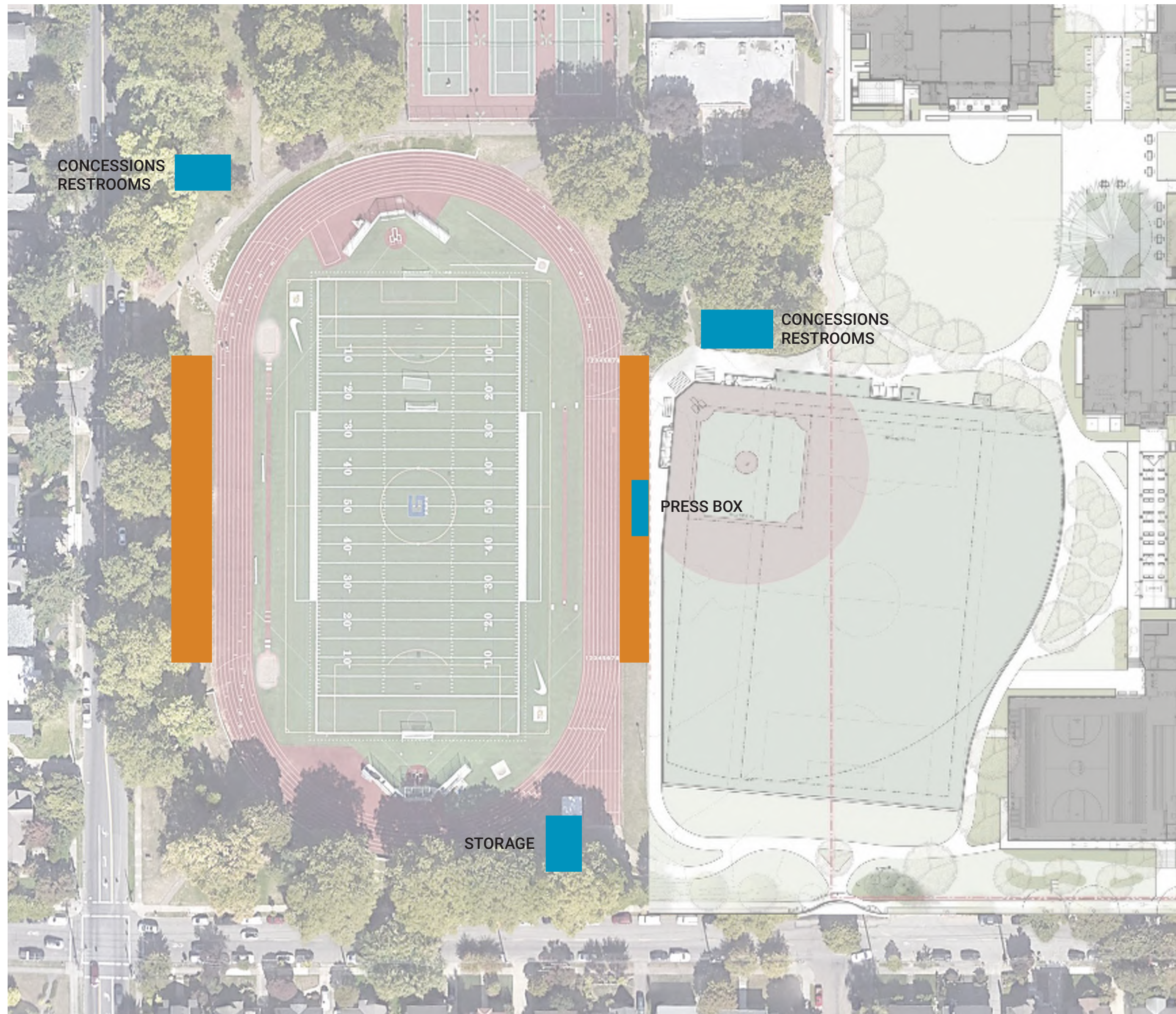
PROS

1. General: Seating and lights extend capabilities of the Bowl including hosting football and soccer games
2. General: Adds lights to upper field to extend use of facility
3. Softball: Able to provide facility that complies with OSAA regulations on upper field including bullpen and permanent covered dugouts
4. Softball: Sufficient backstop and fencing design for safe facility (25', homeplate to fence) on upper field
5. Softball: Upper field linework less distracting (no football lines)
6. Softball: More easily accessible seating for spectators
7. Softball: Closer to locker room and indoor facilities
8. Soccer: Adds length to upper field by extending turf south
9. Track: Increased javelin runway 68' to 95'
10. Track: Added shot put cinder landing area and more practice throwing rings.
11. Track: Added more surface in 'D' Zone (possible high jump)

CONS

1. General: Renovation to new field multi-use field.
2. General: Expansion of multi-use upper field reduces landscape area.
3. General: Requires additional investment for lights on upper field.
4. Track: Discuss and shot put at opposite ends.
5. Little League: Removes one Grant Bowl backstop (permanent chainlink).
6. Baseball and softball: Will need to coordinate as fields overlap on upper field.

FREESTANDING SUPPORT BUILDINGS



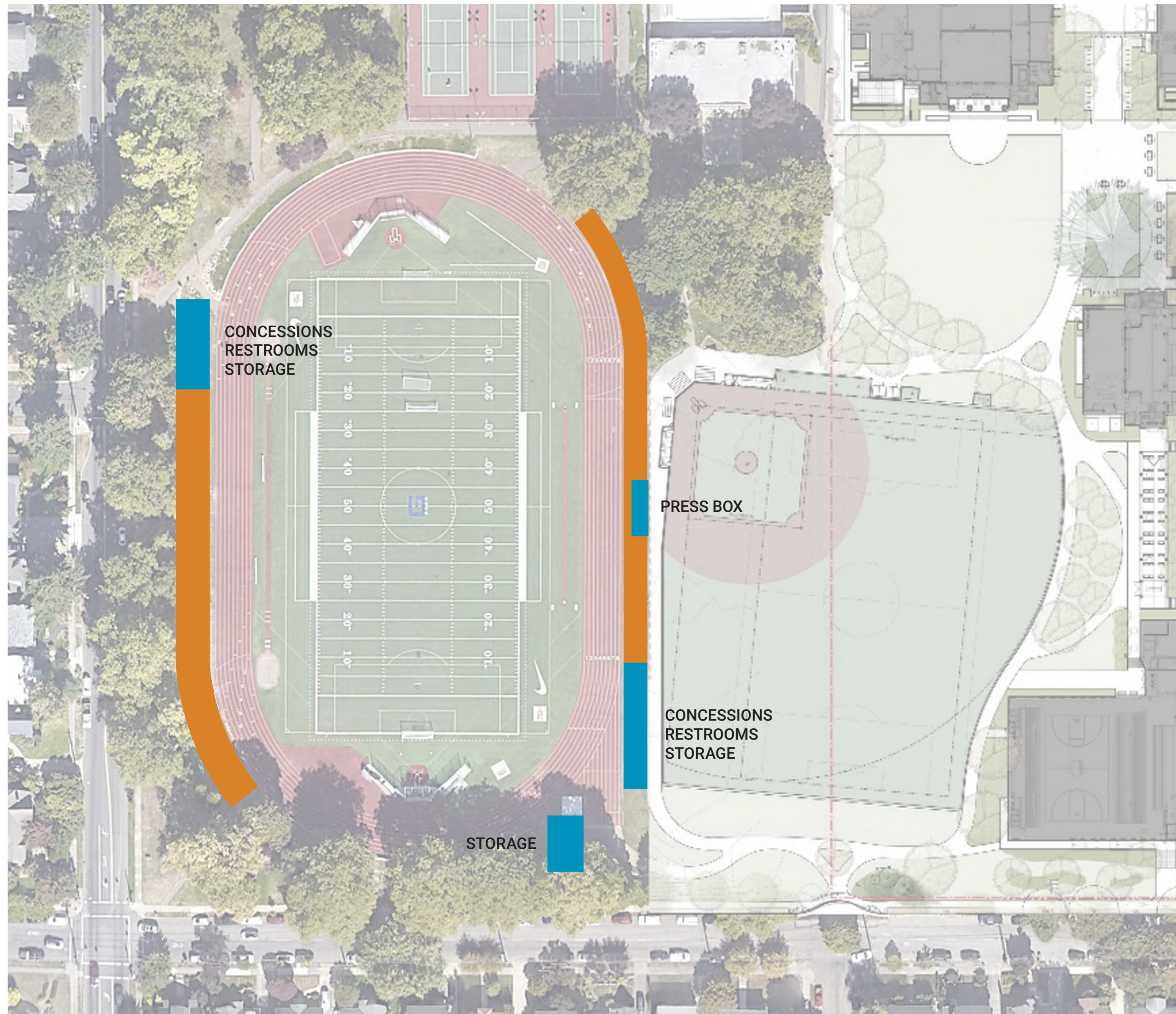
PROS

1. Minimizes building mass at the Bowl
2. Conveniently serves upper field
3. Accommodates 1500 seats
4. Phaseable construction

CONS

1. Visual impact to the park
2. Requires removal of tree(s)
3. Less generous north/south paths behind seating
4. Distance from Bowl to amenities
5. Requires more extensive fencing
6. Lacks clear primary entries to stadium

INTEGRATED SUPPORT BUILDINGS



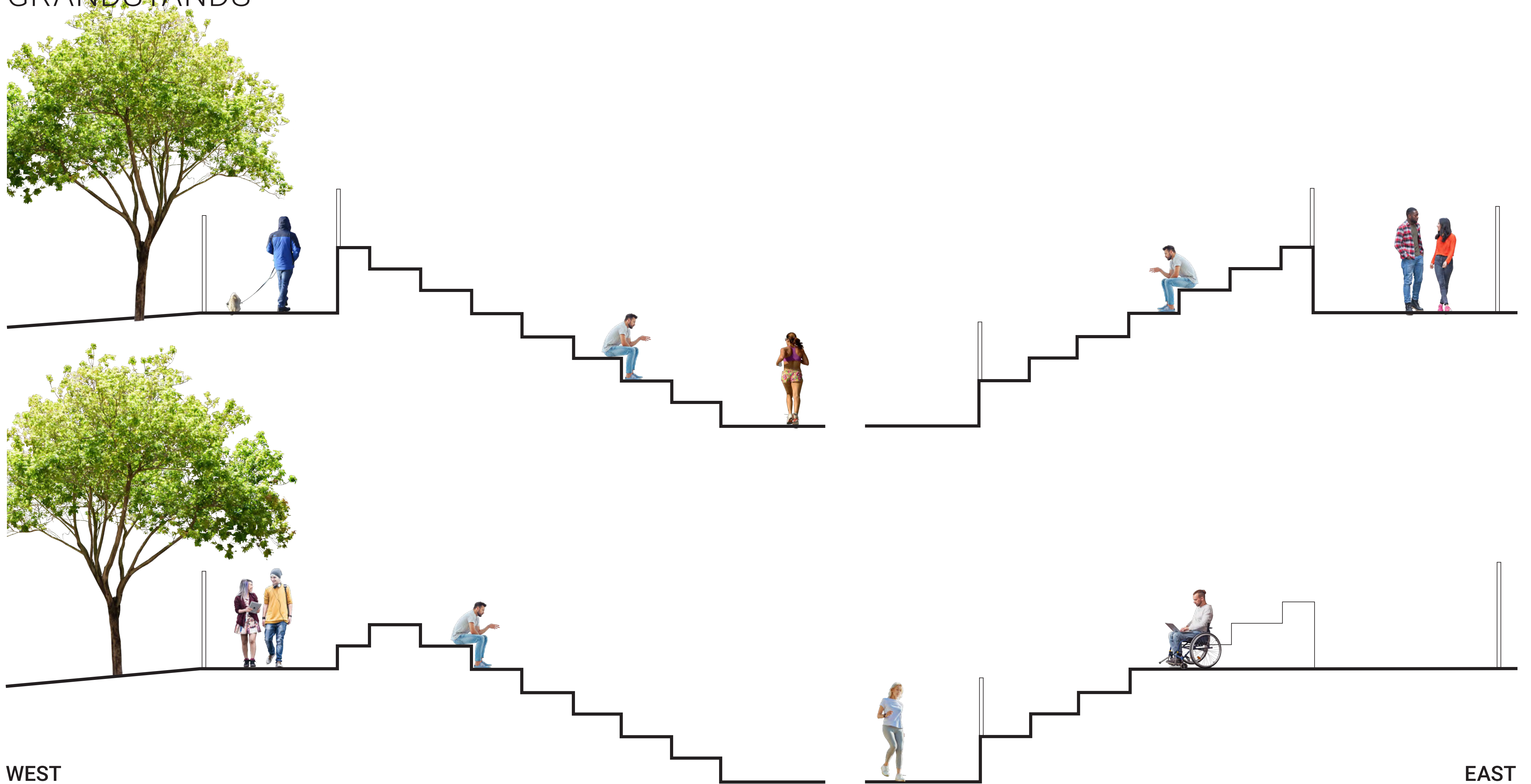
PROS

1. Minimizes building footprint in the park
2. Tree preservation
3. Convenience and accessibility of amenities from Bowl
4. Potential for additional seating capacity in the curves
5. Less visual impact of building masses
6. Potential for seating terraces to merge into the slope
7. Upper field served by convenient amenities
8. Fewer rows allow more generous pathways behind seating

CONS

1. Additional seating areas have poorer sightlines to center of bowl
2. Slightly more building mass near NE 33rd

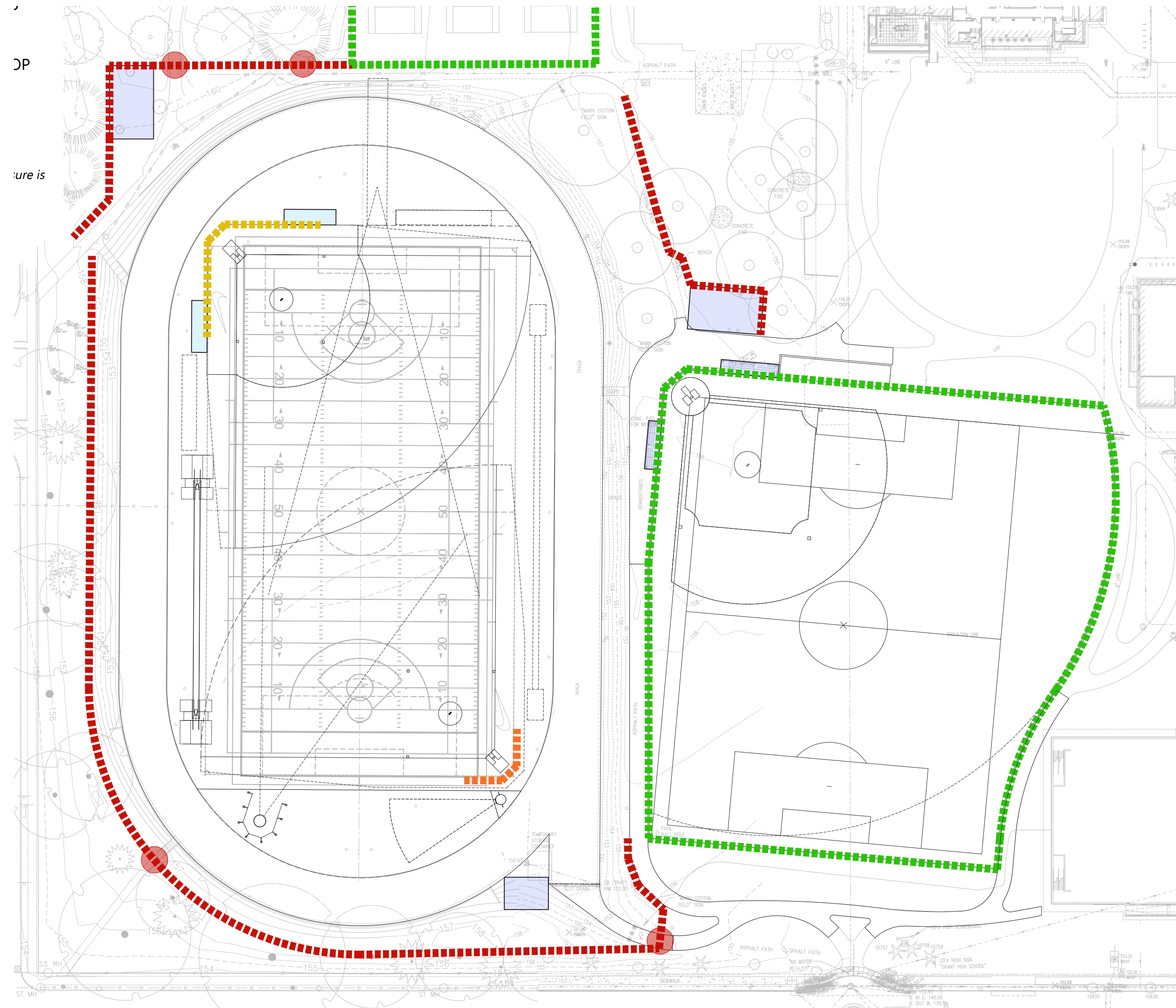
GRANDSTANDS



WEST

EAST

ACCESS & SECURITY



OPTION A

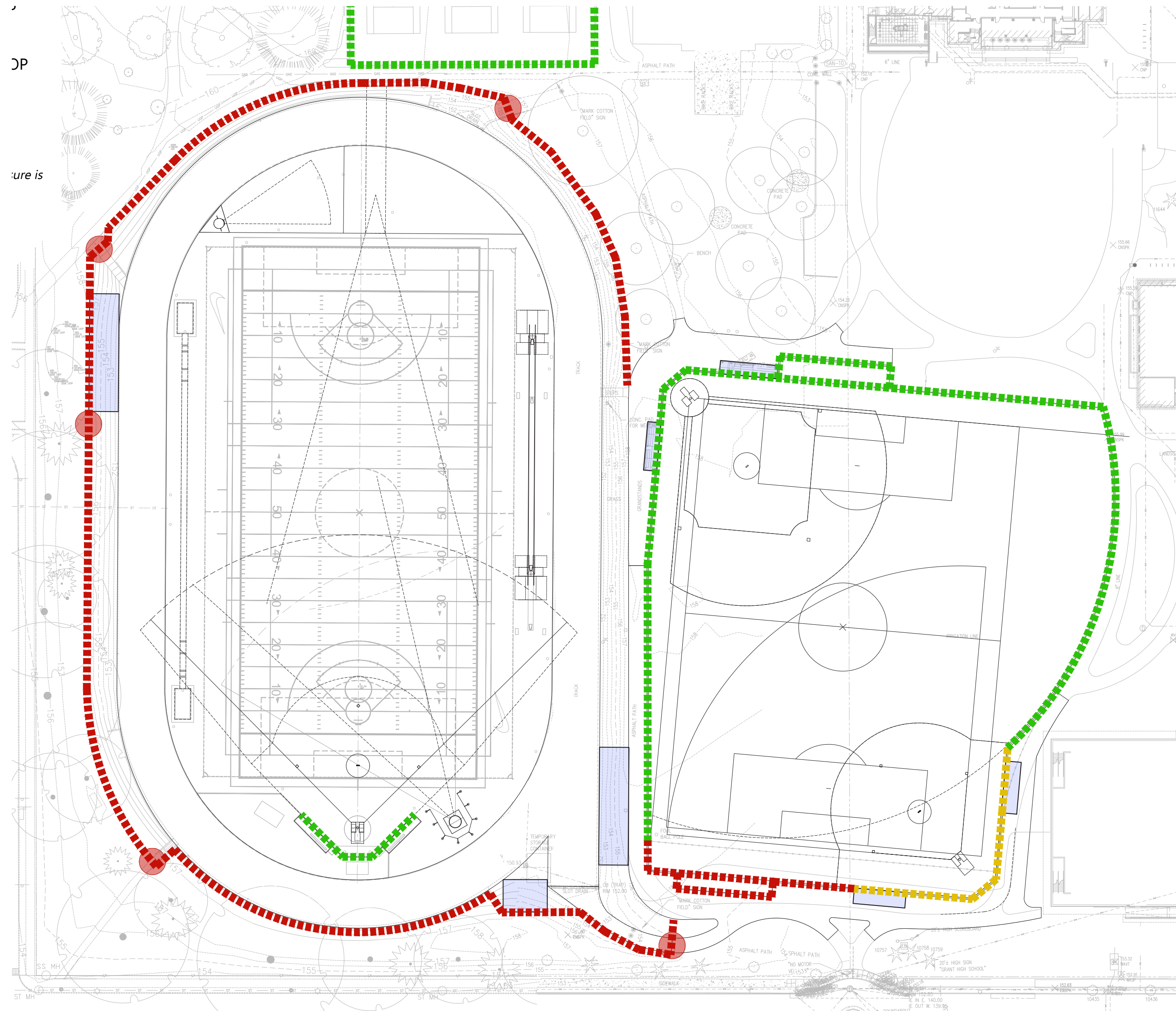
PROS

1. All gates remain open for park use except during ticketed events
2. Wider security perimeter allows movement from one side of the bowl to the other without leaving the ticketed zone
3. Maintains current emergency/maintenance vehicle access to the Bowl

CONS

1. Requires four ticket control points
2. More extensive fencing has bigger visual impact to the park

ACCESS & SECURITY



OPTION B

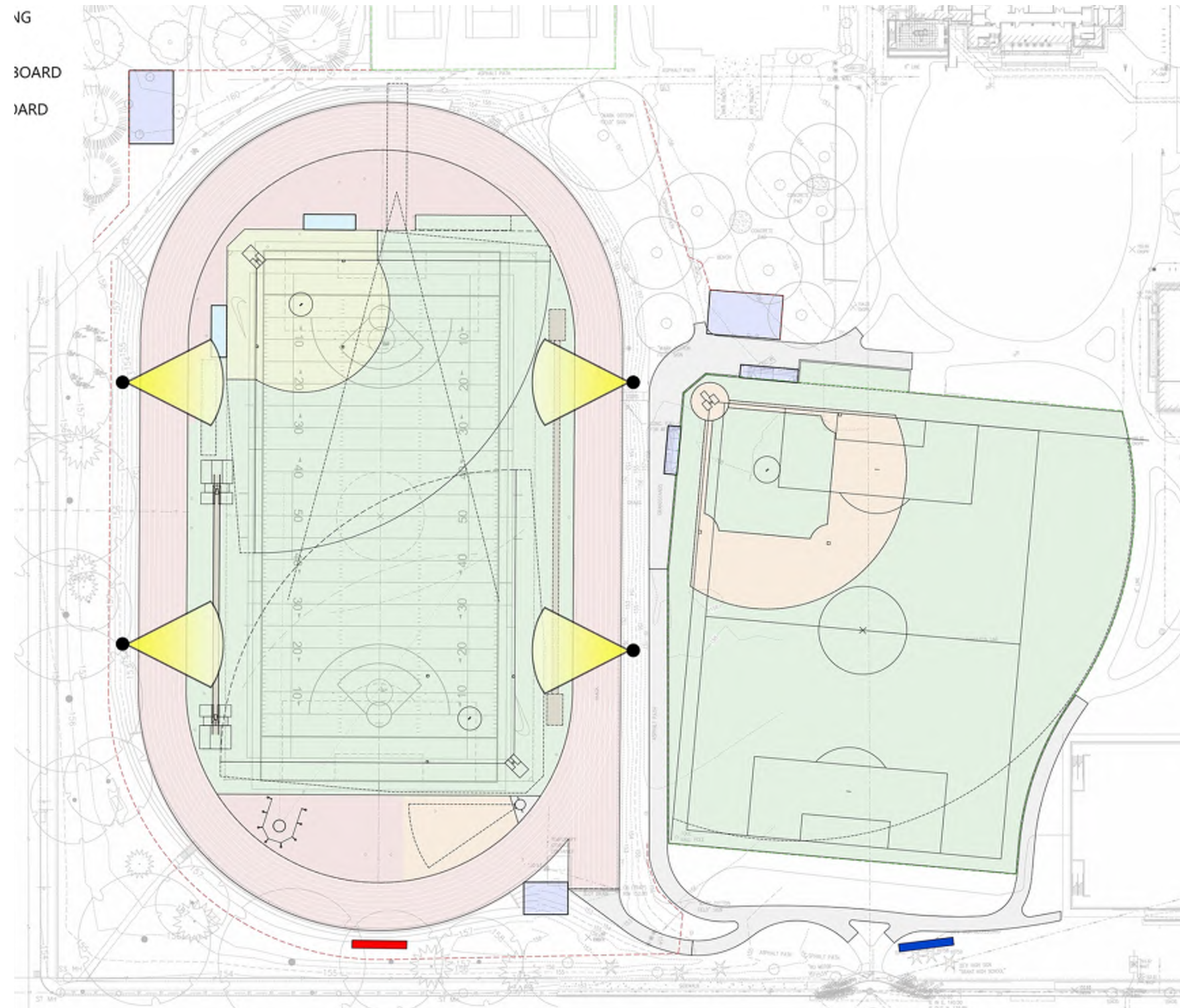
PROS

1. All gates remain open for park use except during ticketed events
2. Requires the minimum extent of fencing to establish secure perimeter
3. Fencing remains close to the bowl to minimize impact to the park
4. Maintains current emergency/maintenance vehicle access to the Bowl
5. Only requires three ticket control points

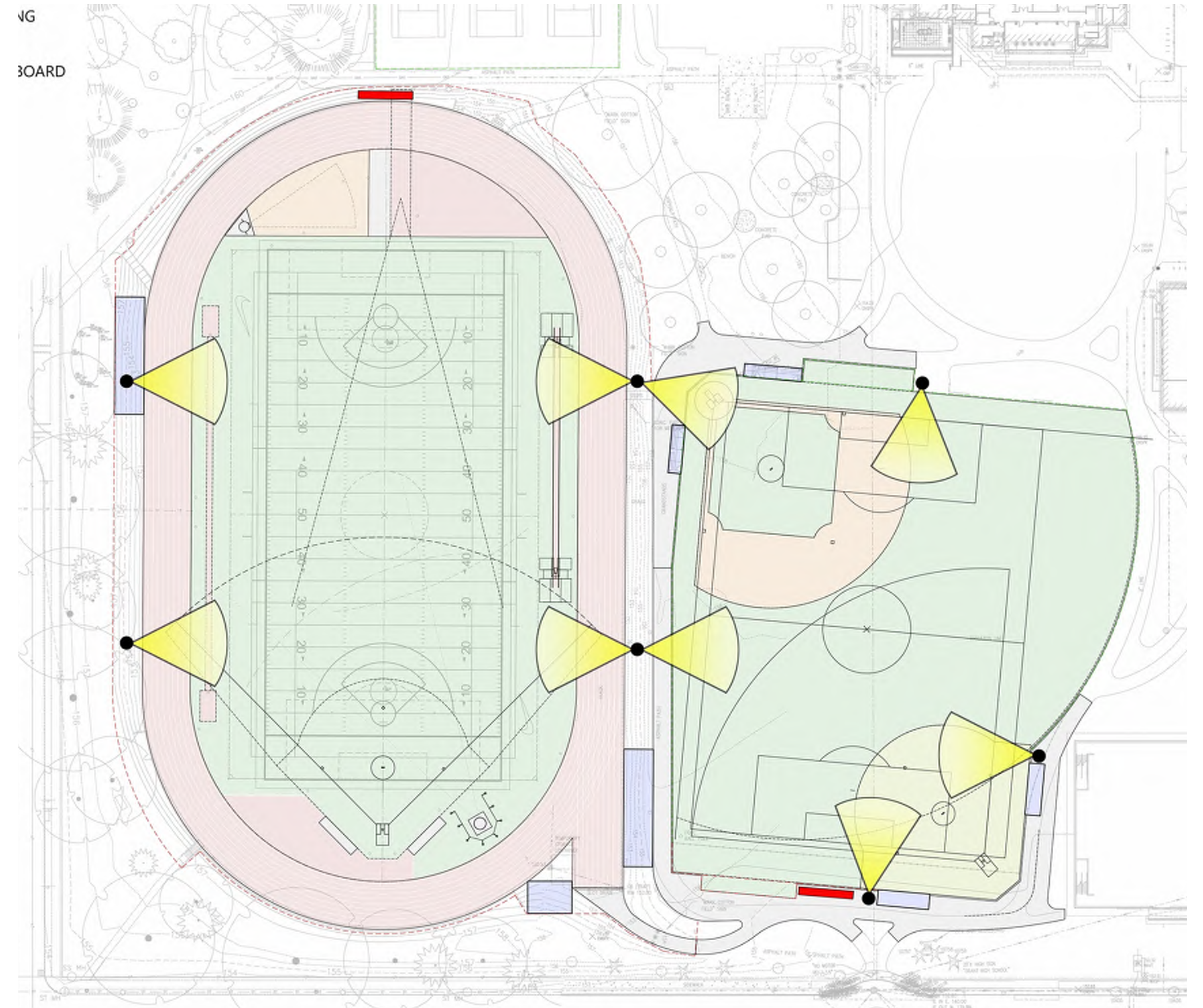
CONS

1. Movement from one side of the bowl to the other without leaving the ticketed zone is not accessible and requires use of the track

LIGHTING & SCOREBOARDS



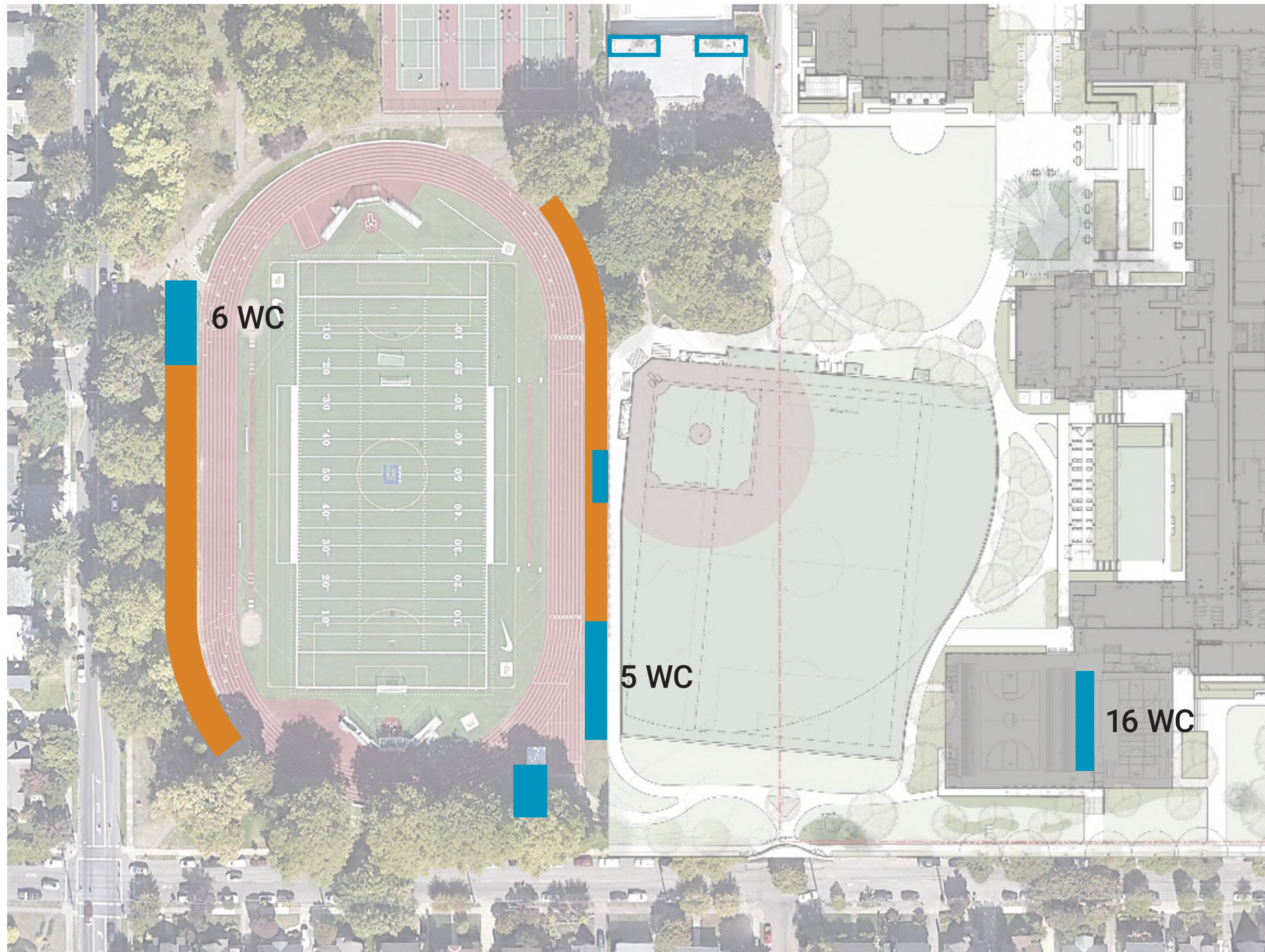
OPTION A



OPTION B

Support Facilities

RESTROOM FACILITIES



REQUIRED WATER CLOSETS 27

EXISTING WATER CLOSETS 16

GHS Gymnasium 16

Pool building could provide additional capacity with operations agreement

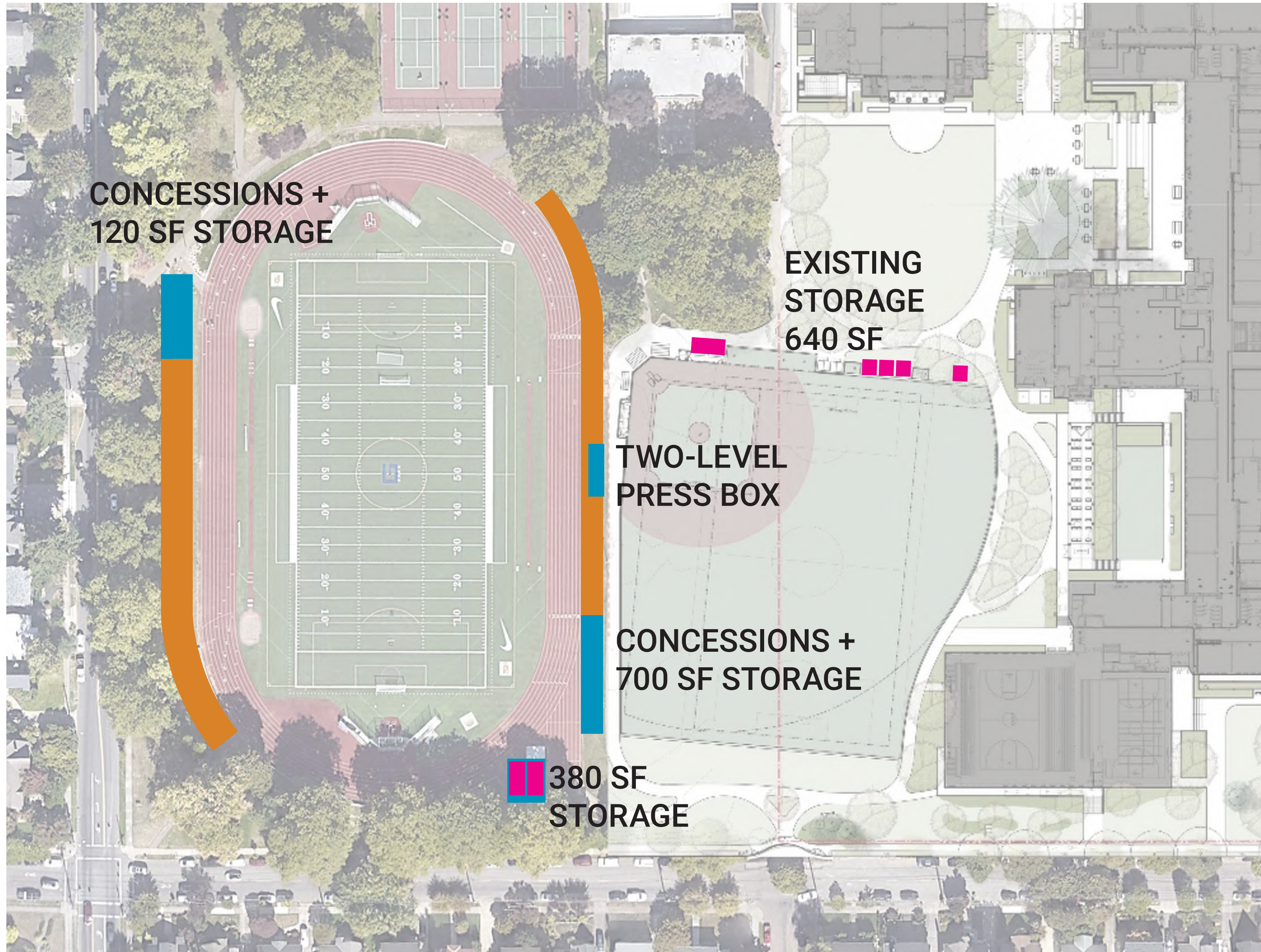
Park restroom north of tennis too far away

PROPOSED FACILITIES AT STADIUM 11

Includes required accessible 4

TOTAL WATER CLOSETS 27

STORAGE + SUPPORT FACILITIES



EXISTING EXTERIOR STORAGE	960 SF
8x20 container	160 sf
(4) 8x15 containers (120 sf ea)	480 sf
(2) 8x20 containers @ track (160 sf ea)	320 sf

PROPOSED EXTERIOR STORAGE 1200 SF

Assumes all existing containers are removed

QUESTION:
How will garbage collection be handled?

NEXT STEPS

Cost estimate work begins next week

Draft master plan report due January 9

Thank You

AERIAL VIEW



WEST GRANDSTAND



EAST GRANDSTAND



LOOKING WEST



LOOKING EAST FROM THOMPSON ST



LOOKING SOUTHEAST ALONG 33RD



LOOKING EAST



GRANT HIGH SCHOOL EVENTS

Event	Number of events per year	Number of attendees	Currently held at Grant Y/N	Notes:
Boy's varsity soccer	7	200	some	Daylight dependent
Girl's varsity soccer	7	200	some	Daylight dependent
Cross Country	2	1000*	Y	*Including participants
Track and Field	3	2000* for meets, 3000* for Cotton	Y	*Including participants
Softball	14	100	N	
Varsity Football	5	1500	N	
JV Football	5	200	N	
Boy's Varsity Basketball	12	1000	Y	
Boy's JV Basketball	12	100	Y	
Boy's JV2 Basketball	12	100	Y	
Girl's Varsity Basketball	12	300	Y	
Girl's JV Basketball	12	100	Y	
Girl's JV2 Basketball	12	100	Y	
Eight Grade Information Night	1	2000	Y	
Back to School night	1	2000	Y	
Grantasia	1	1800	Y	
Theater Performances	2	1000*	Y	*Including participants
Band Concerts	2	1000*	Y	*Including participants
Choir Concerts	2	1000*	Y	*Including participants
Dance performances	3	1000*	Y	*Including participants

Currently, there are approximately **29 events** per year at Grant High School that draw 1000 or more people.

The proposed improvements to Grant Bowl would add **5 new** events of that scale per year.

